

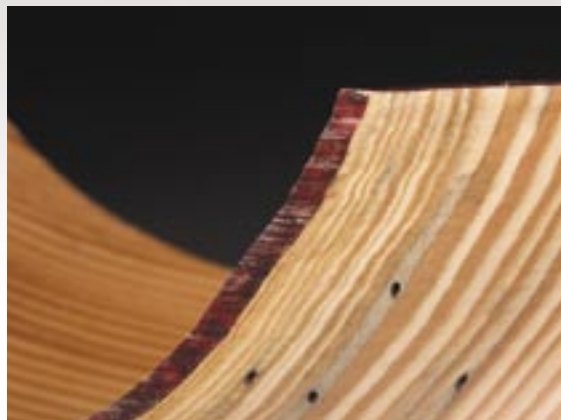
## REDEFINING MINIMALISM



# Bill Luce

[billuce.com](http://billuce.com)

"This piece is from a recent series that has taken my passion for the minimalist approach in a slightly different direction. The shape contains a certain intrigue for me in the flatness of the partial rim, the straightness of the sides, the near rectangular outline of the bowl when viewed from above, the simple curve when viewed from the side, and the power of the grain running the long way in the bowl. Note that the near edge of the bowl is the natural edge of the tree and the holes are wormholes."



*Untitled Series: #3*  
Douglas fir  
4¼x13x8¼"  
Colored rim

Reprinted with permission.  
American Association of Woodturners